



# MSP Amenities Master Plan and Design

## 2018 Universal Access in Airports Conference

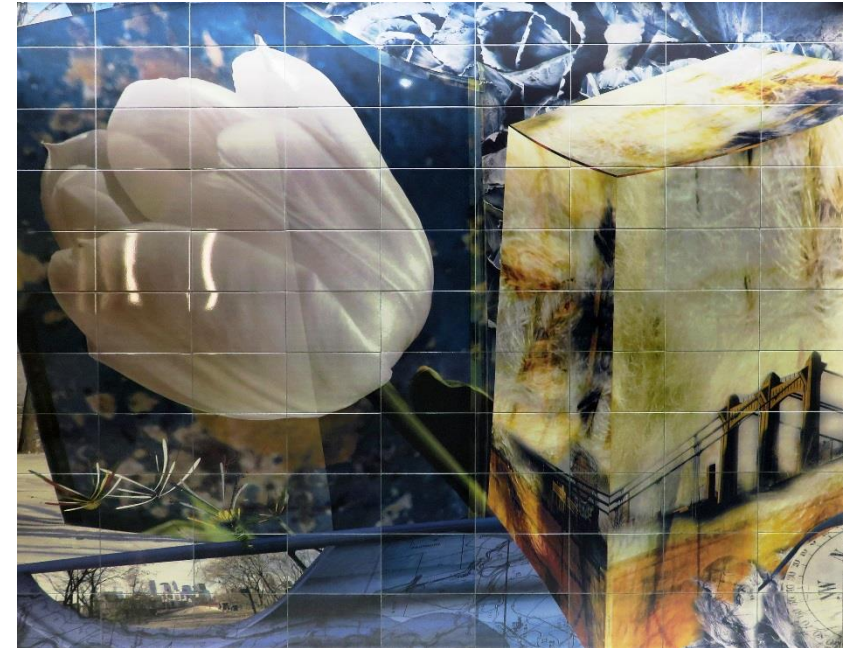
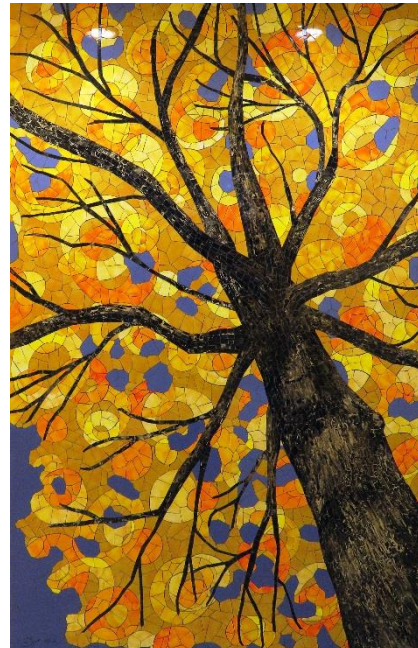
Contact: Jens Vange AIA, LEED AP, CDT, Alliance, [jvange@alliance.us](mailto:jvange@alliance.us), 612.874.4124







Restrooms most commonly visited place in airports and  
2nd most important factor for passenger satisfaction.

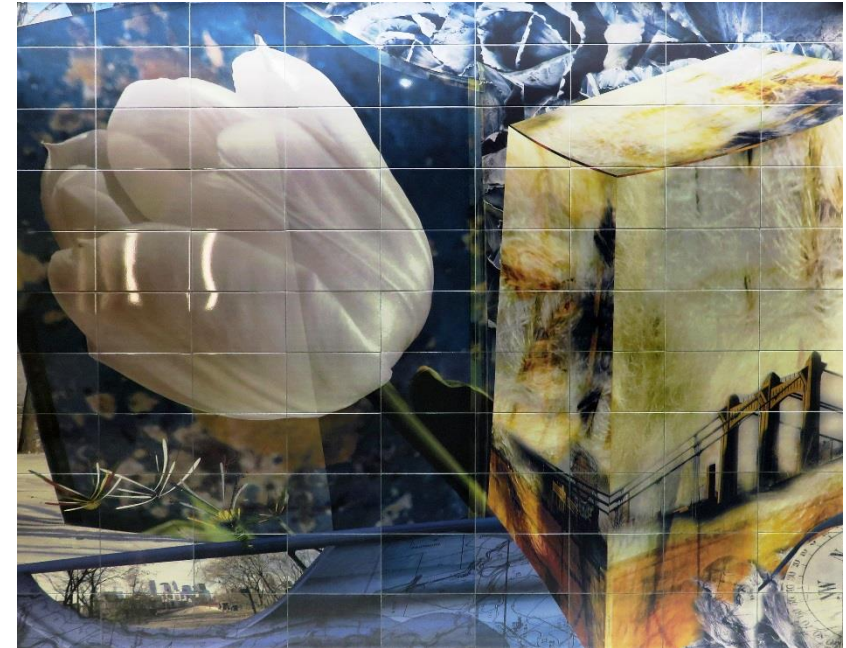
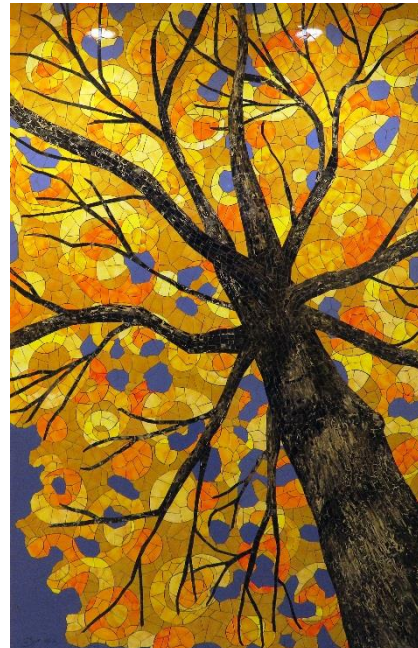






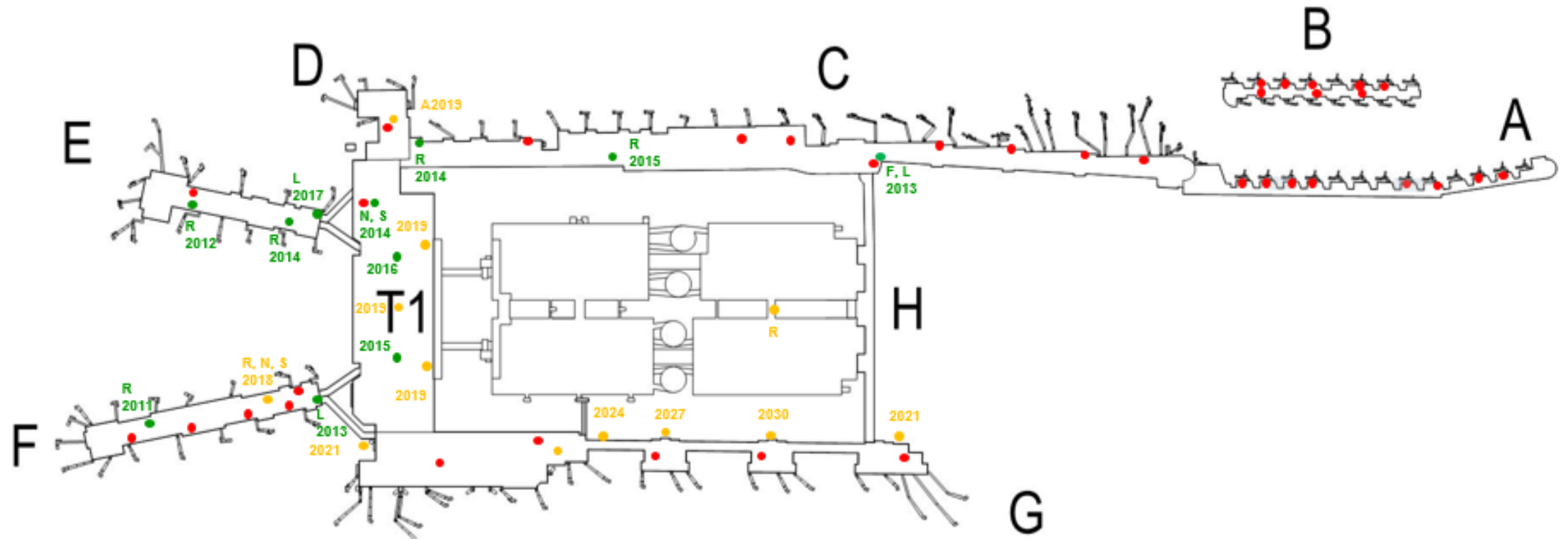
Restrooms most commonly visited place in airports and  
2nd most important factor for passenger satisfaction.

Amenities are a key component of a restroom program.



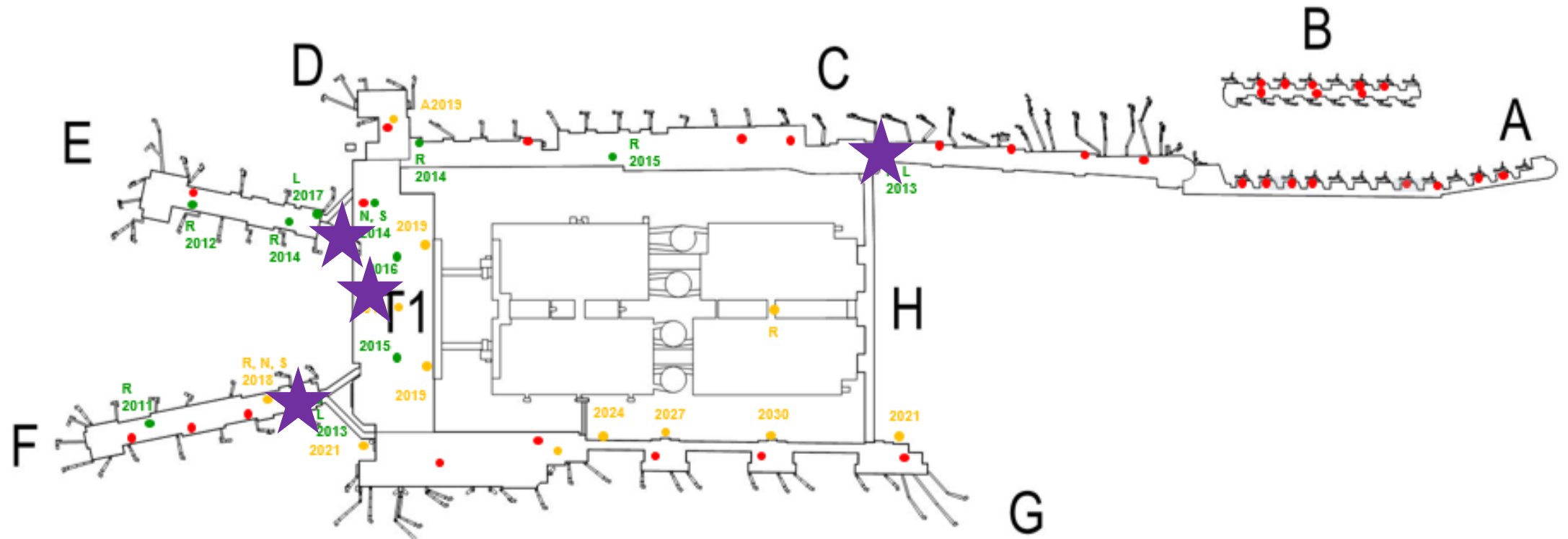
## MSP Master Plan

- 100 restroom sets in two terminals
- Amenities to be spaced at approximate 900 feet spacing throughout terminals



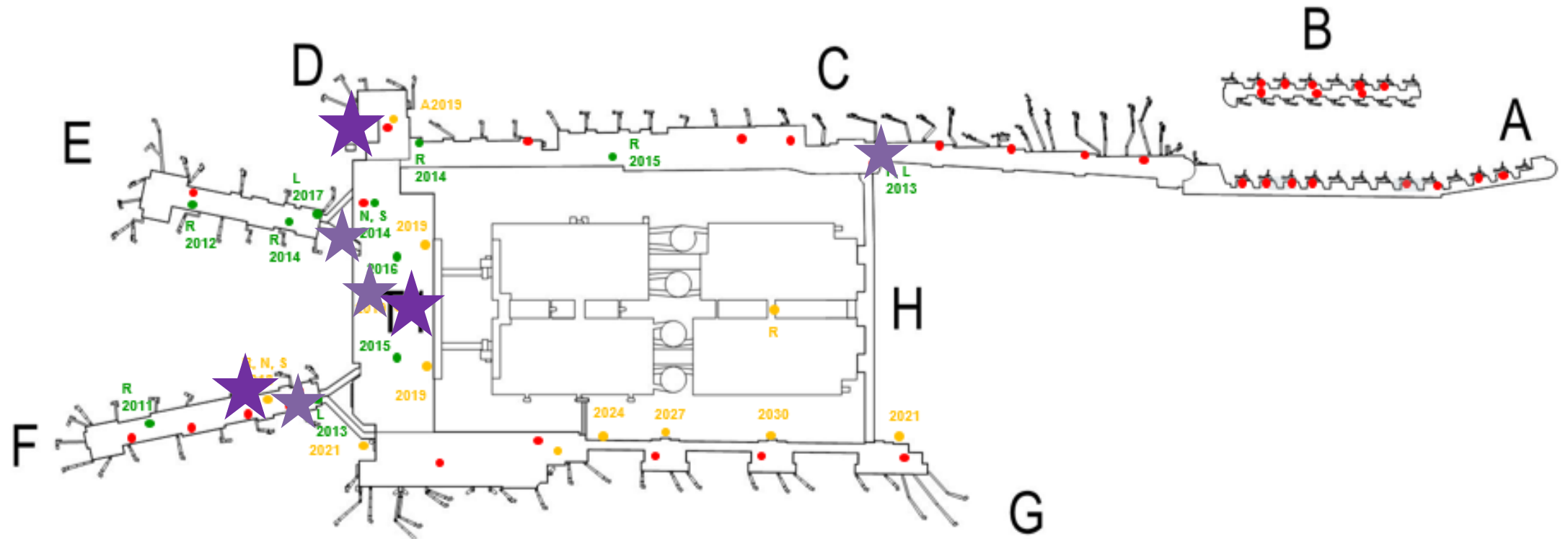
## MSP Master Plan

- Current amenity locations



## MSP Master Plan

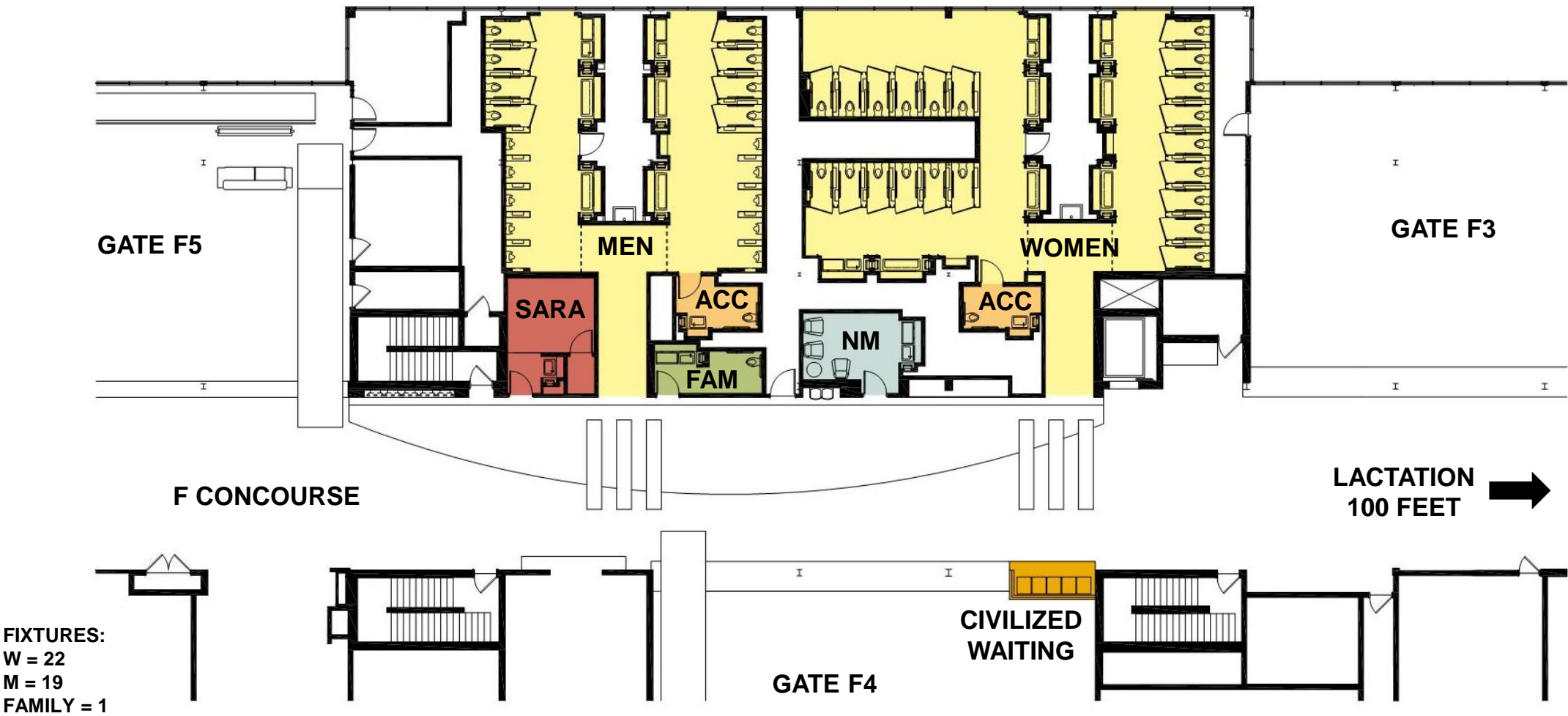
- Amenities completion 2019



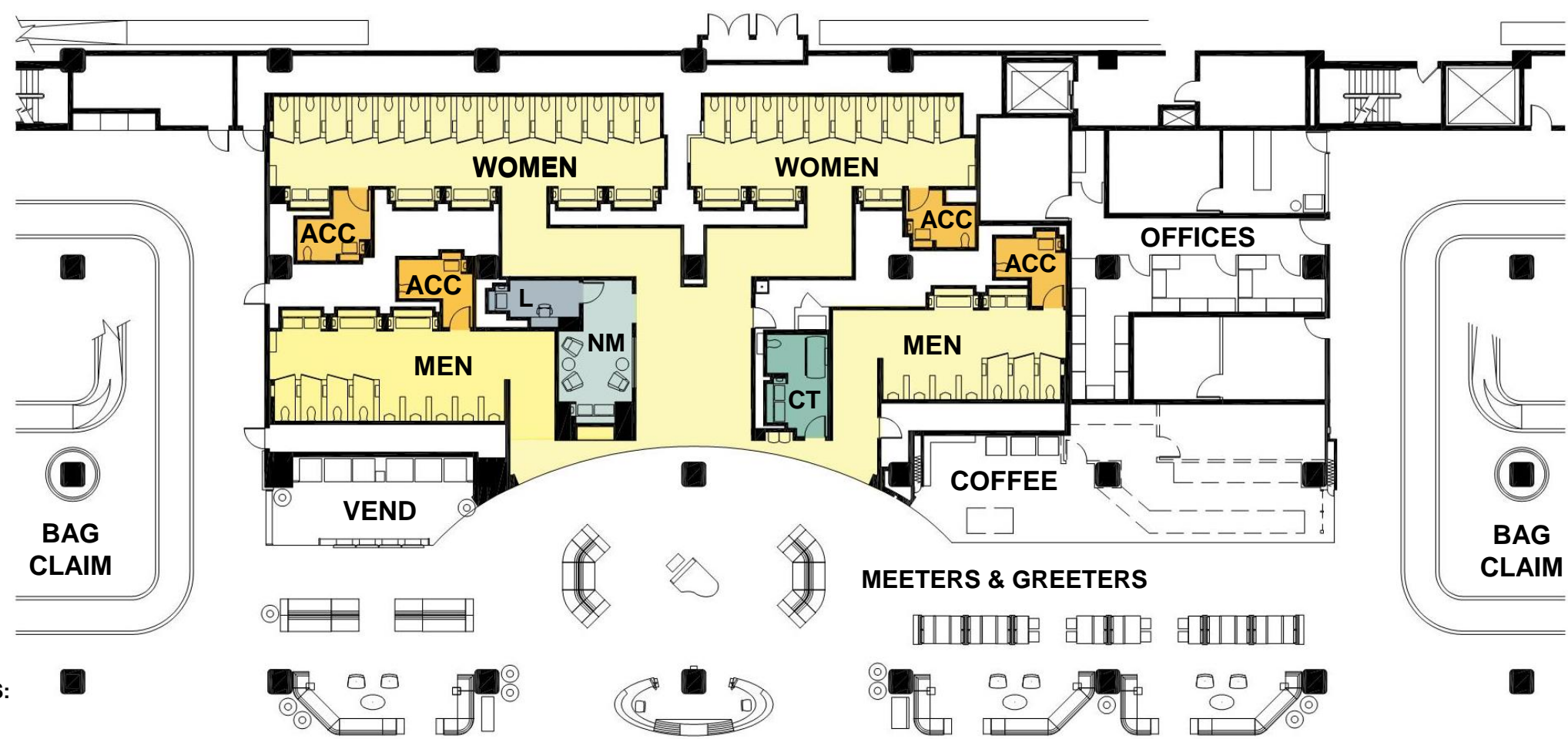




New Concourse F Restroom Set – Open 2019:



# New Arrivals Restroom Set – Open 2019:

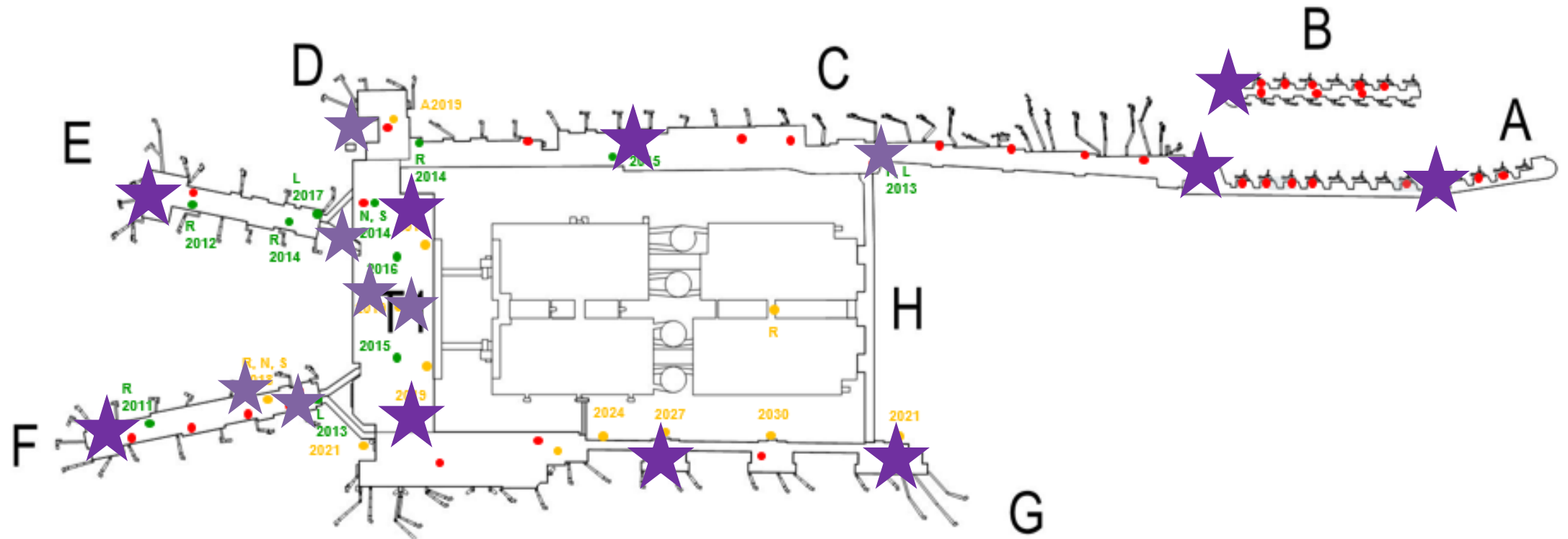


**FIXTURES:**  
 W = 27  
 M = 16  
 FAMILY / CHANGE TABLE = 1



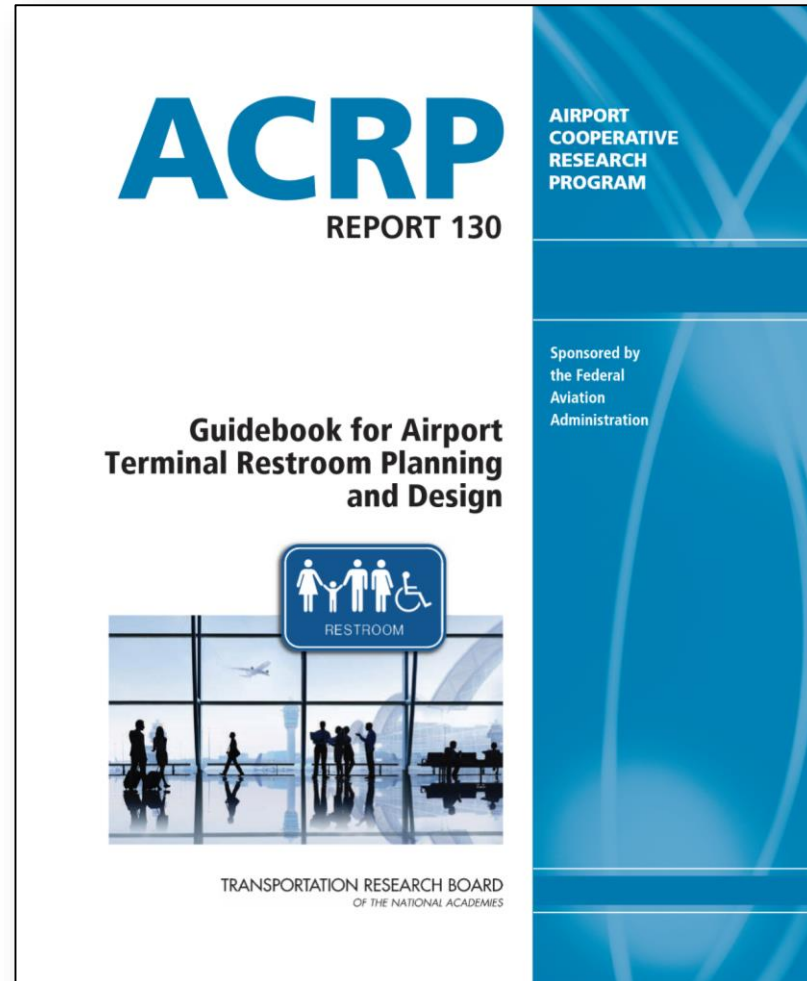
## MSP Master Plan

- Anticipated future amenities locations





ALLIANCE



**COMING 2020!**

## Prototype: Civilized Waiting Area





## Prototype: Lactation



## Prototype: Nursing Mothers



## Prototype: Service Animal Relief Area (SARA)

