



Introduction

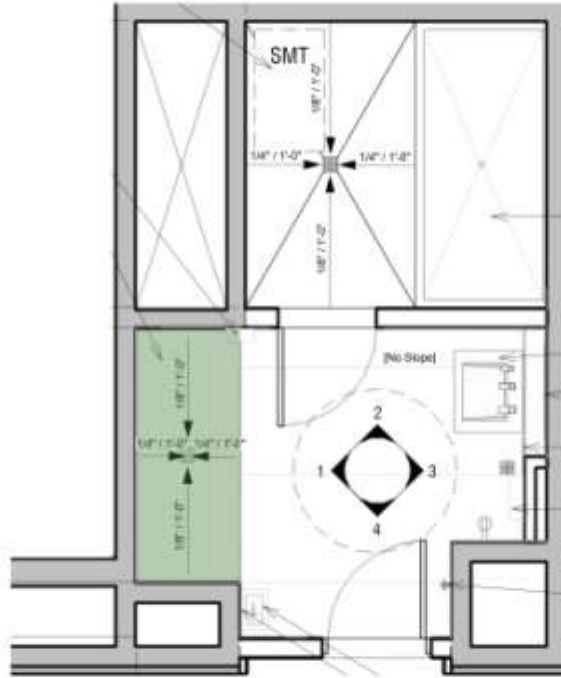
SFO Pet Relief Areas bring comfort and a calming environment to travelers with animal companions. This amenity will provide a friendly environment accessible to passengers of all abilities. The space will accommodate the basic necessities of travel, providing enough space for a single passenger, their pet and bags.

This document is intended to illustrate SFO's design goals and opportunities for continued innovation. It presumes a minimum adherence to governing building codes and builds upon key values established in the REACH document.

The document should be interpreted as a baseline for design teams. It describes a series of best practices ranging from locations to finish materials that ensure a high level of customer service. Not all recommendations may be achievable on all projects.

This document also invites design teams to continue innovating. Many best practices have yet to be identified, technologies continue to change, and fresh design ideas are always welcome.

Above all, the design standard is provided as a launch point for design teams to provide inviting and peaceful Pet Relief facilities.



Door Entry

Doors should have a frosted, textured or semi-opaque panel. This allows enough privacy for the guest and pet, while demonstrating occupancy to those in que.

A transparent icon indicating Animal Relief must occur above 4'-0" from finished floor. This allows for visibility of occupancy and usage.



Door Access

(Locks with indicator and EZ Thumb Turn)

Privacy Lock with Indicator

Product: Schlage
L9056L-17A-630AM-L383-722-L583-363

Permanent Core & Mortise Housing

Product: Medeco
32W0200-26-K3S with CT-Z34 Cam

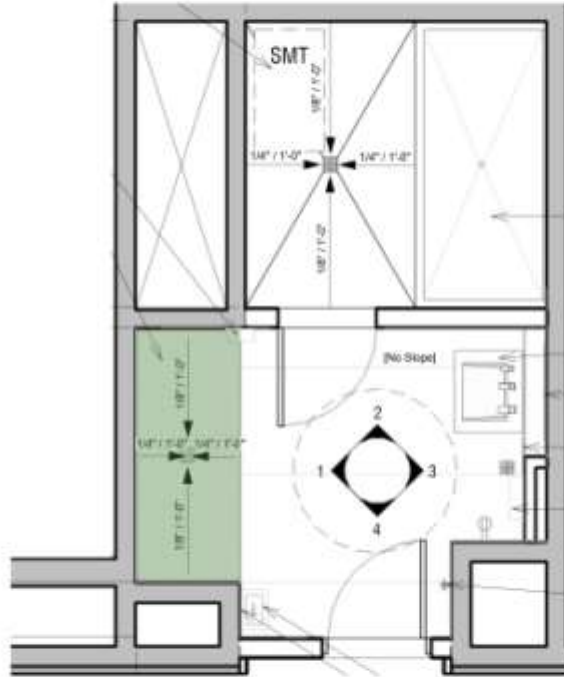
Construction Core

Product: Medeco
32W201-CC-06



Privacy

Locks are provided in the single occupancy space for privacy.

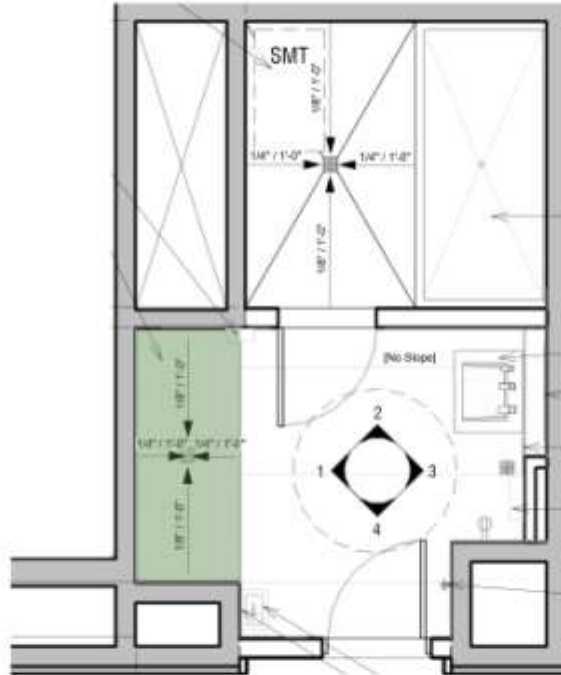


Signage Types

- Courtesy Signage
Signage requesting guests to pick up after their pets (with call number)
- Raised Tactile Floor Plan with Braille at door entry exterior
- Occupancy Indicators integrated into door locks should be provided

Emergency Call Button

An Emergency Call Button will be provided for those in need of assistance or in the case of emergency.



Turf Material

- Material** Synthetic grass
- Assembly** Large-format tile or sheets
- Color** medium or dark tone
- Optional Accessory** Fire Hydrant
Pee Post

Pre-Approved Products

- Artificial Grass:**
- Product K9 Grass Classic
- Artificial Grass:**
- Product K9 Grass Lite

Note:

Provide three sets of artificial grass as stock for custodial. Extras allows for overnight cleaning and quick replacements.

Drainage and flush rinse system must be provided with artificial turf.



Lighting Quality

Lighting sets the tone for a tranquil environment in the Pet Relief Area. Lighting should be natural or replicating sunlight artificially. The color temperature should be consistent. Light sources should not be visible unless it is an accent lens.

Lighting Conditions

- Type** Light Emitting Diode (LED)
- Color** ~ 4500 K Temperature
- Field** Ceiling recessed fixtures
- Ambient** Light coves or back-lit planes
- Accent** Lens or custom feature

Maintenance Concerns

Provide easy access to bulbs for replacement, such as bulbs behind planes, recessed areas and coves. Make sure the lights can be removed without removing the plane or surface itself.

Lights at coves should be operated with remote drivers for easier maintenance.

Ambiance

Designing a natural space with relaxing audio tones creates a peaceful environment in the Pet Relief Area. The air quality should be fresh, in line with SFO's goals of health and wellness.

Indoor Air Quality

- HVAC** 12 air changes per hour
- Air must be exhausted to exterior to prevent mixing of air into other spaces.



